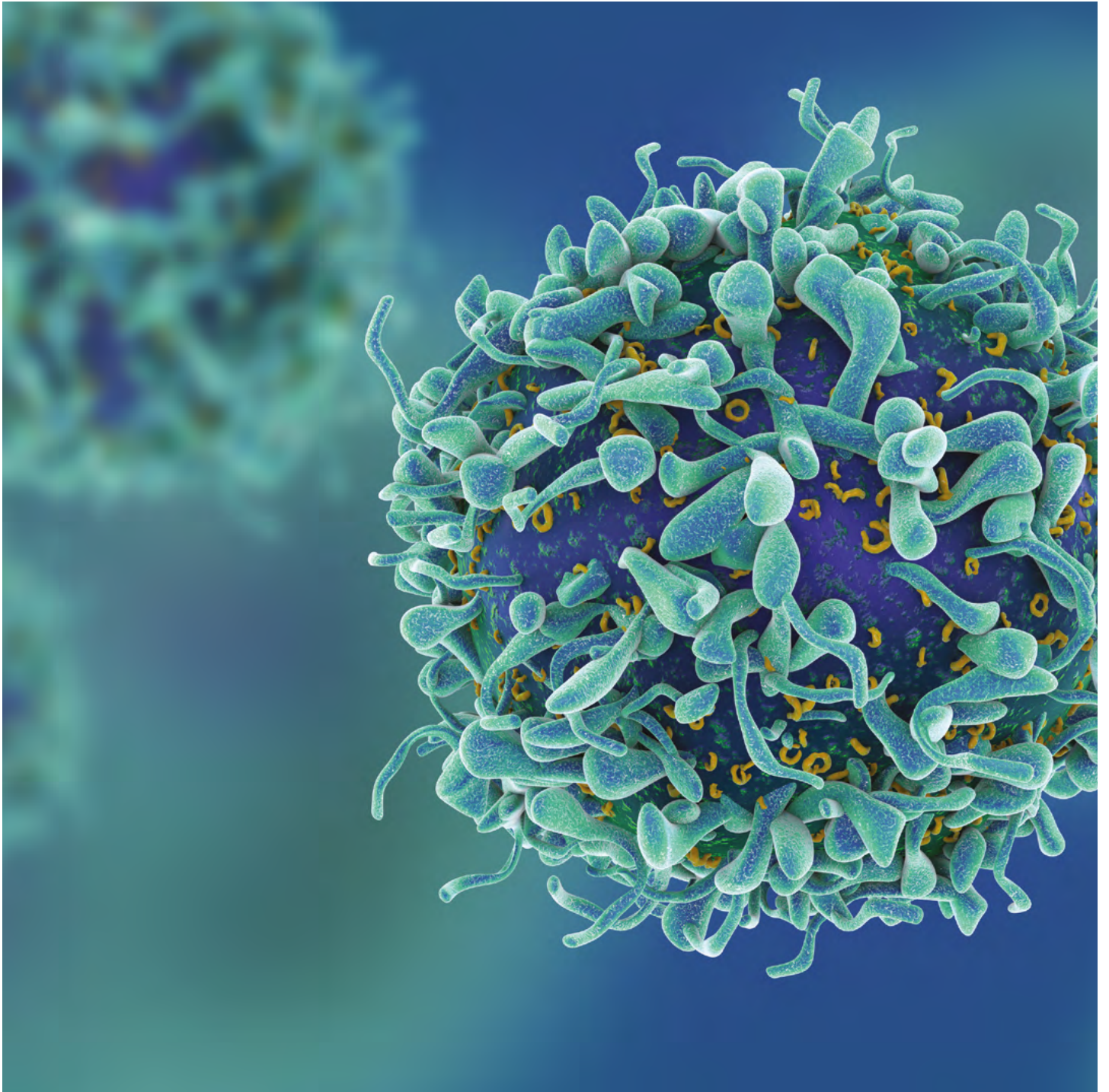


# Cancer Cell Culture

PromoCell®

Solutions for  
Cancer Research



# Cancer Cell Culture

Our cancer cell culture portfolio covers a complete range of applications for culturing human malignant cells. Our innovative cancer cell culture solutions allow for culturing primary human cancer cells and cancer cell lines as 3D spheroids or 2D adherent monolayers. The xeno-free and serum-free formulation of our media allows for highly standardized cell culture conditions, and therefore ensures a high degree of reproducibility for your experiments. In addition, we provide a wide range of products for subsequent cell biological analysis.

## Primary Cancer Culture System D-ACF

PromoCell's Primary Cancer Culture System D-ACF is a standardized, defined and animal component-free (D-ACF) system for the isolation and culture of human primary tumor cells. It supports the long-term culture of cancer cells while maintaining the clonal diversity of malignant subpopulations. Due to precise stromal control, prolonged culture allows for functional selection of malignant cells. This principle enables access to an enriched population of primary cancer cells, also suitable for the generation of cancer cell lines.

## 3D Tumorsphere Medium XF

The 3D Tumorsphere Medium XF has been designed to meet your requirements for the extended serial 3D tumorsphere culture. It supports the most commonly used cancer cell lines in tumorsphere/mammosphere culture. Continuous proliferation is supported during serial passage of 3D tumorsphere cultures. Thus, this culture system is also applicable for in vitro models of metastasis.

## Cancer Cell Line Medium XF

The PromoCell Cancer Cell Line Medium XF was designed with the aim of achieving a universal, consistent and xeno-free environment for culturing most commonly used human cancer cell lines in 2D. It has no undefined components such as fetal calf serum, extracts or hydrolysates and exhibits very low lot-to-lot variability. Being broadly usable across all common adherently growing cancer cell lines, this new culture medium is a cost-effective solution for ensuring efficient, genuinely standardized routine cultures.

**Tab. 1: Overview of the PromoCell Cancer Cell Media Portfolio and their applications.**

	Primary Cancer Culture System D-ACF	3D Tumorsphere Medium XF	Cancer Cell Line Medium XF
<b>Product Specification</b>			
Main application	Primary cancer cell isolation maintenance of heterogeneity	Extended 3D tumorsphere culture of cancer cell lines/enrichment of CSCs	Adherent long-term expansion of cancer cell lines
Culture pattern	2D/3D	3D	2D
Formulation	Defined formulation, animal-component free	Serum-free, xeno-free	Serum-free, xeno-free
Additional supplementation required	No	No	No
Plasticware	TC-treated	Suspension Culture	TC-treated
Culture surface treatment required	NCCD-Reagent (incl.)	No	Human fibronectin (C-43060; not included)
<b>Product Application</b>			
Selective isolation of malignant cells from primary tumors	✓	✗	✗
Selective isolation of malignant cells from PDX	✓	✗	✗
Limited stroma support	✓	✗	✗
Prevention of stroma overgrowth	✓	✗	✗
Enrichment of malignant cells from established cultures	✓	✗	✗
Depletion of non-cancerous cells from established cultures	✓	✗	✗
Serial 3D tumorsphere culture of established cancer cell lines	✗	✓	✗
Serial 3D mammosphere culture of established cancer cell lines	✗	✓	✗
Serial 3D neurosphere culture of established cancer cell lines	✗	✓	✗
Mammosphere culture (primary mammary stem cells)	✗	✓	✗
Neurosphere culture (primary neural stem cells)	✗	✓	✗
Adherent culture of established cancer cell lines	✗	✗	✓
Establish cell lines from primary cancer cells isolated with PCCS	✗	✓	✓

2D/3D = 2-/3-dimensional, PCCS = Primary Cancer Culture System, TC = tissue culture, PDX = patient-derived xenograft, XF = xeno-free

# Primary Cancer Culture System D-ACF

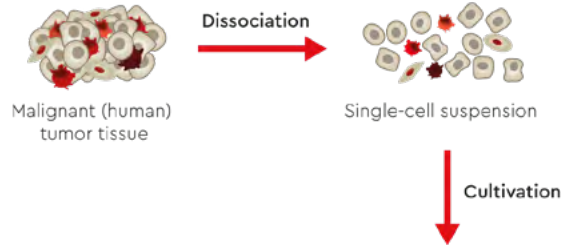
## Key Advantages:

- Perform up to 5 isolations with one bottle of medium
- Maintains the diversity of original malignant tumor cell subpopulations
- Successfully deplete non-malignant cells from the culture
- No stromal overgrowth
- Defined and animal component-free (D-ACF)

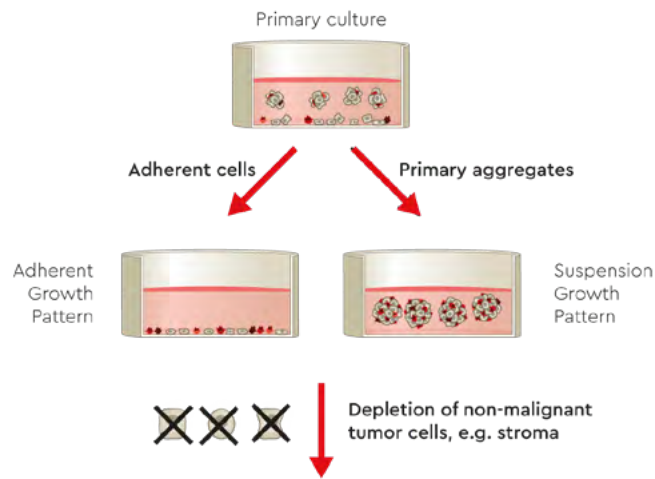
## Recommended for:

- Tumor tissue samples
- Malignant/cancerous cells
- Established primary tumor cell cultures
- Patient-derived xenografts (PDX)

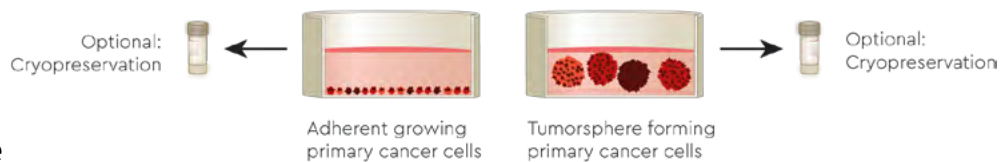
Day 0  
Isolate



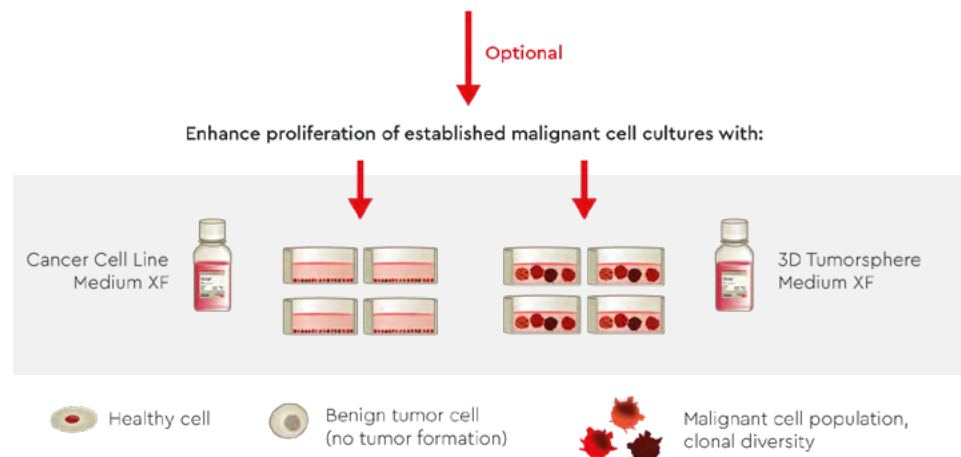
Weeks 2-4  
Establish Primary Culture



Weeks 4-6  
Enriched Malignant Cell Culture



Weeks 6 subseq.  
Enhance Proliferation



**Fig. 1: Overview of the selective isolation of primary cancer cells from (human) tumor samples using the Primary Cancer Culture System.** The PromoCell system makes it possible to reliably deplete non-malignant cells from the cell culture while supporting the maintenance of cancer cells and malignant cell heterogeneity. The optional establishment of cancer cell lines is indicated.

# Primary Cancer Culture System D-ACF

## Product Description:

The PromoCell Primary Cancer Culture System, consisting of the Primary Cancer Cell Medium D-ACF and the NCCD-Reagent, was designed to be the first universally applicable, cost-effective solution for in vitro isolation of long-term primary cultures of human malignancies, e.g. from patient tumor samples or patient-derived xenografts (PDX).

The selection process is achieved in a defined, animal-free culture environment without the use of cytotoxic agents. Since malignancy itself is employed as the exclusive functional selection cue, the culture system is applicable

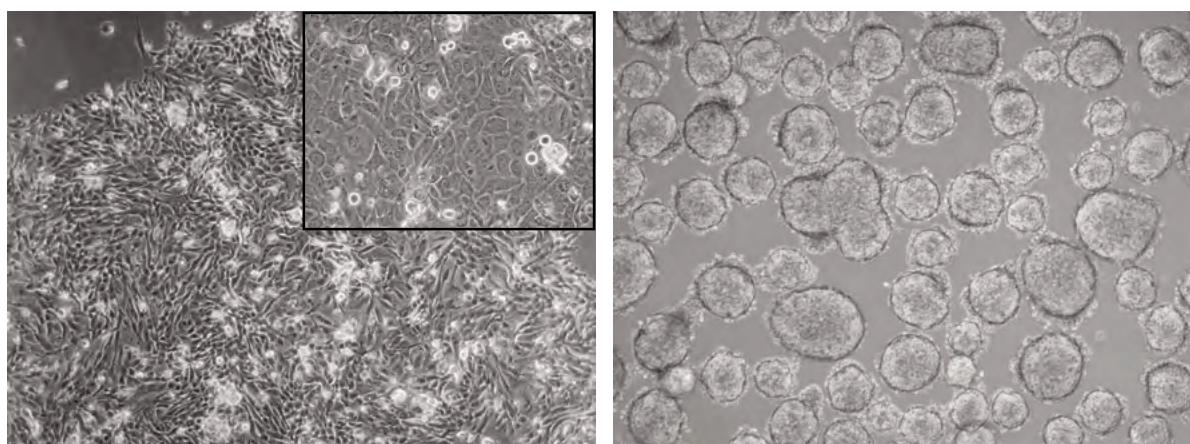
to all types/entities of malignant cells, irrespective of their origin and the stage of the tumor. Provisional enrichment techniques, e.g. cell sorting and reliance on unassured markers, are thus rendered obsolete.

The PromoCell Primary Cancer Culture System is a complete culture system consisting of a bottle of Basal Medium, one vial of SupplementMix and one vial of NCCD-Reagent. One bottle of medium is typically sufficient for 3–5 primary isolations.

Primary cancer cells isolated with the Primary Cancer Culture System may also

be used for the generation of cancer cell lines by enhancing proliferation with the 3D Tumorsphere Medium XF (for cultures featuring a suspension growth pattern) or the Cancer Cell Line Medium XF (adherent growth pattern) (Fig. 1).

The Primary Cancer Culture System can also be used for other applications, e.g. enriching malignant subpopulation(s) in established cell lines or depleting of stromal cells and other non-cancerous cells from established primary cancer cell cultures.



**Fig. 2: Primary cultures after 4 weeks derived from human tumor samples with the Primary Cancer Culture System.** **Left:** Primary culture derived from a squamous cell carcinoma featuring an adherent growth pattern. The upper right inset reveals cellular heterogeneity at a greater magnification. **Right:** Primary culture derived from a low-grade small cell lung cancer featuring a suspension growth pattern (3D sphere formation).

## Primary Cancer Culture System

Product	Size	Catalog Number
Primary Cancer Culture System consists of		C-28081
Primary Cancer Cell Medium D-ACF Primary	250 ml	C-28080*
Cancer Cell Medium D-ACF SupplementMix	for 250 ml	C-39880*
NCCD-Reagent	2 ml	C-43080



\*not available as single items

### More information and detailed protocols available:

- Application Note – Selective In Vitro Culture of Primary Human Cancer Cells from Human Tumor Samples ([www.promocell.com/scientific-resources/application-notes](http://www.promocell.com/scientific-resources/application-notes))
- Posters – 3D Tumorsphere Culture Model; Tumorsphere Cell Culture – Method and Its Efficiency ([www.promocell.com/scientific-resources/posters](http://www.promocell.com/scientific-resources/posters))
- Website ([www.promocell.com/product-category/cancer-cell-culture](http://www.promocell.com/product-category/cancer-cell-culture))

# 3D Tumorsphere Medium XF

## Key Advantages:

- Establish 3D tumorsphere cultures from 2D cancer cell lines
- Suitable for routine culture
- Works with most commonly used cancer cell lines
- Xeno-free and serum-free formulation

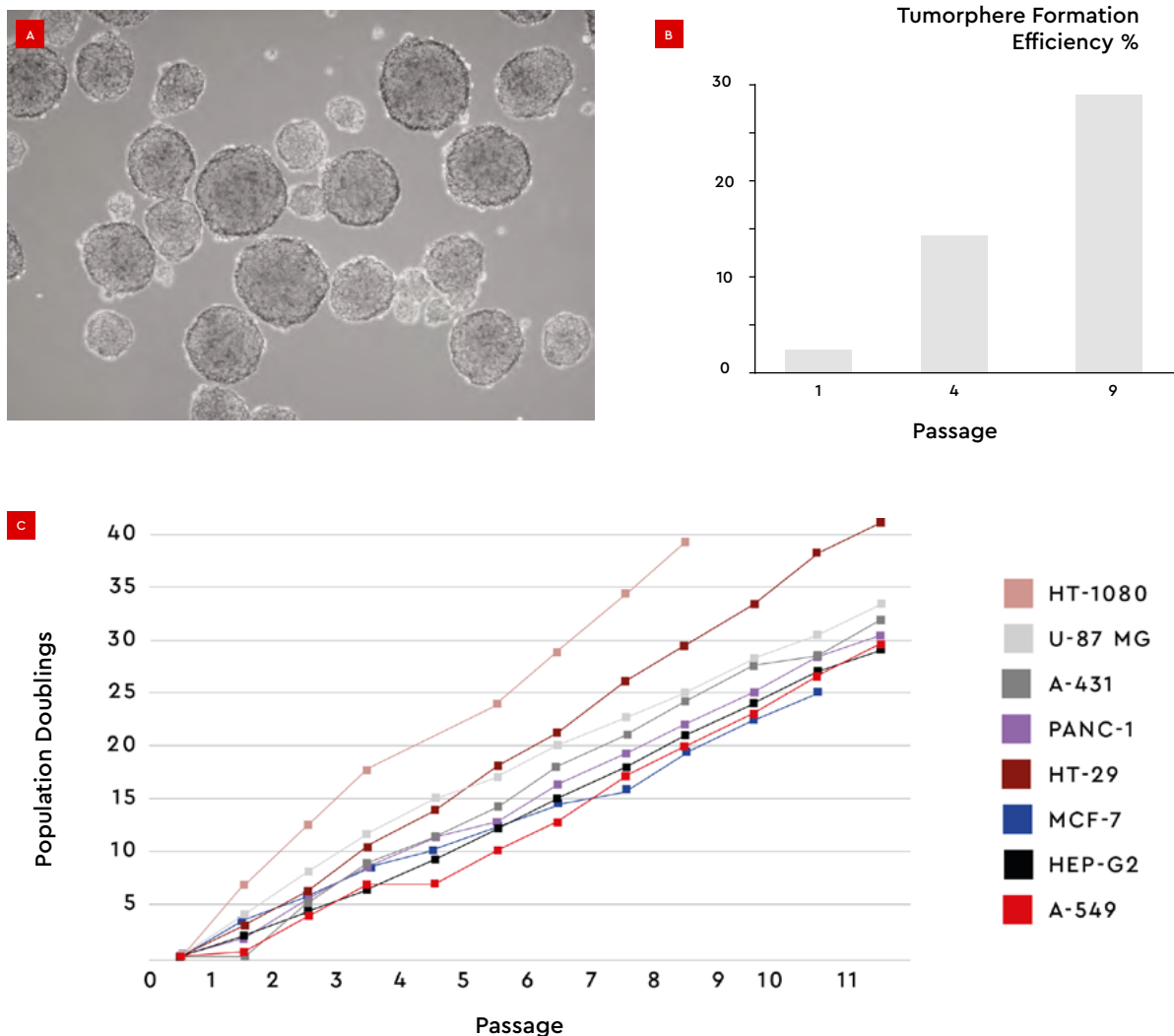
## Recommended for:

- (Human) cancer cell lines (Tab. 2)
- Established tumorsphere cultures

## Product Description:

The 3D Tumorsphere Medium XF supports the most commonly used cancer stem cell lines in tumorsphere/mammosphere cultures (Tab. 2). In contrast to the current adherent 2D culture of cancer cells, this type of 3D culture selectively exploits inherent biologic features of cancer stem cells (CSCs), such as anoikis resistance and self-renewal. It also provides a more physiological 3D microenvironment. Continuous proliferation is also supported during serial passage of 3D tumorsphere

cultures (see Fig. 3B, C). Thus, this culture system is also applicable for *in vitro* models of metastasis. In addition, the xeno-free and serum-free formulation provides a standardized culture devoid of stimuli of uncharacterized origin. This is a significant benefit in terms of CSCs which are a population of highly responsive stem cells requiring reliable and reproducible control of the self-renewal/differentiation axis.



**Fig. 3: 3D tumorsphere cell culture of cancer cells and quantifications.** **A:** HT1080 fibrosarcoma cells after 10 serial passages. **B:** Serial passage of MCF-7 cells in the 3D Tumorsphere Medium XF results in a significant increase of TFE from 2% in P1 to 28% in P9. **C:** Proliferation curves of various established cancer cell lines expanded by serial passage of 3D tumorsphere cultures.

# 3D Tumorsphere Medium XF

**Tab. 2:**  
List of some cell types successfully tested for serial passage with the PromoCell 3D Tumorsphere Medium XF.

Tissue	Tested Cell Line	Cell Line Origin
Brain	U-87 MG	Grade IV glioblastoma / astrocytoma of the human brain
Breast	MCF-7	Pleural effusion of metastatic human breast adenocarcinoma
Breast	MDA-MB-231	Pleural effusion of metastatic human breast adenocarcinoma (triple-negative)
Colon	HT-29	Human colon adenocarcinoma
Connective Tissue	HT1080	Human fibrosarcoma
Liver	HepG@	Hepatocellular carcinoma of the human liver
Lung	A-549	Human lung carcinoma
Pancreas	Panc-1	Epithelioid carcinoma of the human pancreatic duct
Prostate	LNCap	Lymph node metastasis of human prostate adenocarcinoma
Skin	A-431	Epidermoid carcinoma of the human skin



## 3D Tumorsphere Medium XF

Product	Size	Catalog Number
3D Tumorsphere Medium XF	250 ml	C-28070
3D Tumorsphere Medium XF, phenol red-free	250 ml	C-28075

**More information and detailed protocols available:**

- Application Notes – Tumorsphere Culture of Cancer Stem Cells (CSC) with the PromoCell 3D Tumorsphere Medium XF; Determination of the Tumorsphere Formation Efficiency (TFE) with the PromoCell 3D Tumorsphere Medium XF; Extended Mammosphere Culture of Human Breast Cancer Cells; Extended Neurosphere Culture of Brain Tumor Stem Cells with the PromoCell 3D Tumorsphere Medium XF ([www.promocell.com/scientific-resources/application-notes](http://www.promocell.com/scientific-resources/application-notes))
- Posters – 3D Tumorsphere Culture Model; Tumorsphere Cell Culture – Method and Its Efficiency ([www.promocell.com/scientific-resources/posters](http://www.promocell.com/scientific-resources/posters))
- Website ([www.promocell.com/product-category/cancer-cell-culture](http://www.promocell.com/product-category/cancer-cell-culture))

# Cancer Cell Line Medium XF

## Key Advantages:

- Robust growth performance for standard 2D cell culture
- Compatible with most commonly used cancer cell lines
- Xeno-free and serum-free formulation

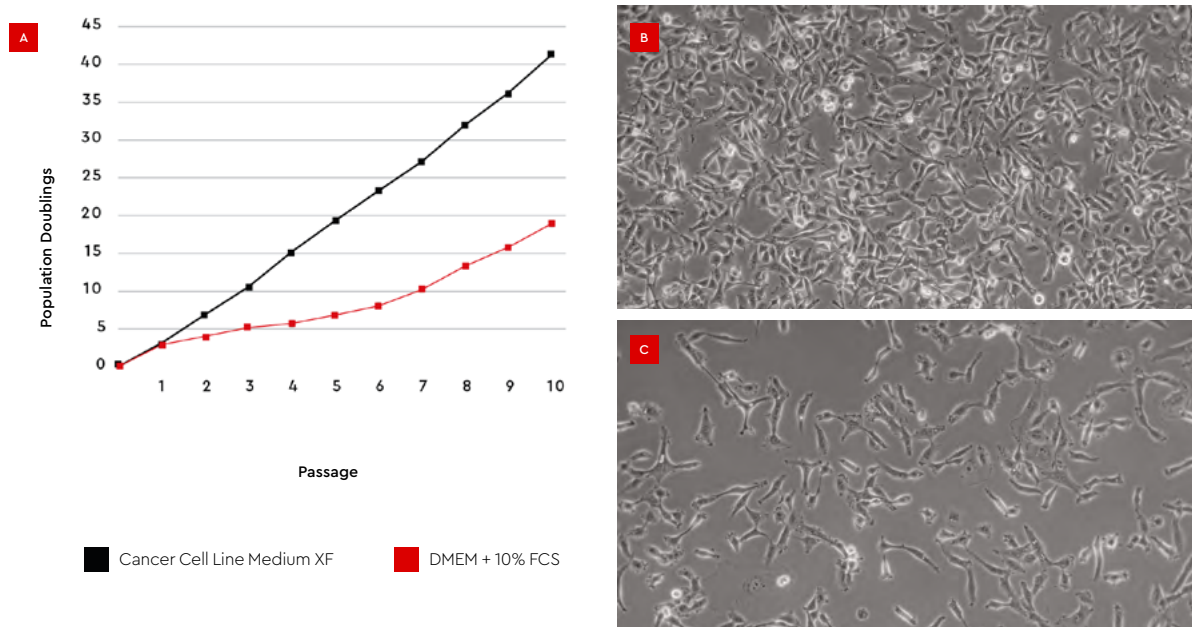
## Recommended for:

- (Human) cancer cell lines

## Product Description:

The Cancer Cell Line Medium XF has no undefined components such as fetal calf serum (FCS), extracts or hydrolysates and exhibits very low lot-to-lot variability. Traditionally, established cell lines have been propagated almost exclusively in standard culture media supplemented with significant amounts of FCS. However, poorly defined culture media components such as FCS are a well-known and significant source of variations and unwanted physiological, genetic and epigenetic effects. These variations may endanger the reliability of

experimental results. The Cancer Cell Line Medium XF provides a xeno-free and serum-free culture environment which is key for obtaining more accurate results with cell line models and facilitates subsequent data analysis and interpretation. Being broadly usable across all common adherently growing cancer cell lines, this new culture medium is a cost-effective solution for ensuring efficient, genuinely standardized routine cultures and exploiting the unique features of permanent cell lines as *in vitro* research models.



**Fig. 4**

**A: Expansion performance of the HT1080 fibrosarcoma cell line in the Cancer Cell Line Medium XF compared with conventional culture conditions.** HT1080 cells were plated with 5,000 cells/cm<sup>2</sup> in Cancer Cell Line Medium XF on fibronectin-coated vessels (red) or in DMEM + 2 mM L-Glutamine + 10% FCS (grey). Subsequently, the cells were cultured for 10 consecutive passages with a passage interval of 3 – 4 days.

**B, C: Morphology of HT1080 fibrosarcoma cells cultured in Cancer Cell Line Medium XF.** Exemplary images of HT1080 on day three after subculture (P7) are shown in the Cancer Cell Line Medium XF (B) and conventional culture conditions (C).

## Cancer Cell Line Medium XF

Product	Size	Catalog Number
Cancer Cell Line Medium XF	250 ml	C-28077
Fibronectin solution, human (1 mg/ml)	5 ml	C-43060



**More information and detailed protocols available:**

- Application Note – Standardized Culturing of Established Cancer Cell Lines in Xeno-Free Conditions with PromoCell's Cancer Cell Line Medium XF ([www.promocell.com/scientific-resources/application-notes](http://www.promocell.com/scientific-resources/application-notes))
- Website ([www.promocell.com/product-category/cancer-cell-culture](http://www.promocell.com/product-category/cancer-cell-culture))

## Related Products:

Media, Buffers and Reagents	Size	Catalog Number
Accutase-Solution	100 ml	C-41310
CryoSFM	30 ml / 125 ml	C-29910 / C-29912
DetachKit	3 × 125 ml	C-41210
Dulbecco's PBS, w/o Ca <sup>++</sup> /Mg <sup>++</sup>	500 ml	C-40232
Fibronectin solution, bovine (1 mg/ml)	5 ml	C-43050
Fibronectin solution, human (1 mg/ml)	5 ml	C-43060

Cell-based Assays	Size	Catalog Number
3D Cell Culture Matrix Kit (Alginate Hydrogel)	100 assays	PK-CA577-K517
3D Cell Culture Matrix Kit (BME)	100 assays	PK-CA577-K518
3D Cell Culture Matrix Kit (Duo-Matrix)	100 assays	PK-CA577-K519
3D Cell Culture Scaffold Kit	100 assays	PK-CA577-K990
3D Cell Culture Harvesting Kit	100 samples	PK-CA577-K982
3D Cell Culture Viability Assay Kit	100 samples	PK-CA577-K948

## Related Cancer Research Products:

### Angiogenesis, Cell Invasion & Metastasis

- Primary Cells (e.g. Aortic Endothelial Cells, Dermal Fibroblasts and Smooth Muscle Cells used in co-culture)
- Cell Culture Media (e.g. Endothelial Cell Growth Medium)
- Angiogenesis, Cell Migration & Invasion Assays
- Cytokines & Growth Factors (e.g. VEGF, PDGF, FGF)
- Cell Stains (e.g. stains for viable, necrotic & apoptotic cells)

### Cancer Pathway Research

- Primary Cells (e.g. Dermal Fibroblasts)
- Cell Culture Media (e.g. Fibroblast Medium)
- Cell Stress & Metabolism Assays (e.g. Oxidative Stress, DNA Damage, Cancer Cell Metabolism)
- Cell-based Assays (e.g. for Cell Viability/Proliferation, Cytotoxicity, Apoptosis/Necrosis)
- Cell Signaling Assays (e.g. Beta-Secretase)
- Cell Transfection Reagents (e.g. Magnet-assisted System MATra)
- Senescence Detection & Cell Cycle Analysis Kits
- Antibodies, ELISAs & Cytokines/Growth Factors

### Tools for Drug Screening & Testing

- Cell-based/Cell-free Assay Kits & ELISAs (e.g. for Toxicology, Cancer Drug Development & ADME)
- Biochemicals, Proteins & Antibodies

More information available at [www.promocell.com/product-category/cell-biology](http://www.promocell.com/product-category/cell-biology)

**PromoCell GmbH**  
Sickingenstr. 63/65  
69126 Heidelberg  
Germany

**USA/Canada**  
Phone: 1 – 866 – 251 – 2860 (toll free)  
Fax: 1 – 866 – 827 – 9219 (toll free)

**Deutschland**  
Telefon: 0800 – 776 66 23 (gebührenfrei)  
Fax: 0800 – 100 83 06 (gebührenfrei)

**France**  
Téléphone: 0800 – 90 93 32 (ligne verte)  
Téléfax: 0800 – 90 27 36 (ligne verte)

**United Kingdom**  
Phone: 0800 96 03 33 (toll free)  
Fax: 0800 169 85 54 (toll free)

**Other Countries**  
Phone: +49 6221 – 649 34 0  
Fax: +49 6221 – 649 34 40

info@promocell.com  
www.promocell.com

© PromoCell GmbH