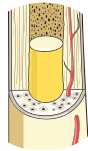


HUMAN CELL TYPES

PromoCell

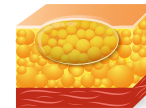
MESENCHYMAL STEM CELLS

Bone Marrow Mesenchymal Stem Cells



Human Mesenchymal Stem Cells from Bone Marrow (hMSC-BM)

Cat. No. C-12974 cryopreserved cells
Cat. No. C-12975 proliferating cells
Cat. No. C-14090 cell pellet



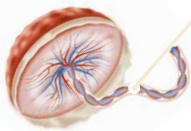
Adipose Tissue Mesenchymal Stem Cells

Human Mesenchymal Stem Cells from Adipose Tissue (hMSC-AT)

Cat. No. C-12977 cryopreserved cells
Cat. No. C-12978 proliferating cells
Cat. No. C-14092 cell pellet

Human Mesenchymal Stem Cells from Umbilical Cord Matrix (hMSC-UC)

Cat. No. C-12971 cryopreserved cells
Cat. No. C-12972 proliferating cells
Cat. No. C-14091 cell pellet



Cord Blood and Placenta Mesenchymal Stem Cells

Positive ≥ 95% +	Negative ≤ 2% +
<ul style="list-style-type: none">• CD105⁺• CD73⁺• CD90⁺	<ul style="list-style-type: none">• CD45⁻• CD34⁻• CD14⁻ or CD11b⁻• CD79α⁻ or CD19⁻• HLA-DR⁻

MSC marker expression
according to the International Society
for Cellular Therapies (ISCT) guidelines

PromoCell GmbH

Sickingenstr. 63/65
69126 Heidelberg
Germany

Email: info@promocell.com
www.promocell.com

USA/Canada

Phone: 1 – 866 – 251 – 2860 (toll free)
Fax: 1 – 866 – 827 – 9219 (toll free)

Deutschland

Telefon: 0800 – 776 66 23 (gebührenfrei)
Fax: 0800 – 100 83 06 (gebührenfrei)

France

Téléphone: 0800 – 90 93 32 (ligne verte)
Téléfax: 0800 – 90 27 36 (ligne verte)

United Kingdom

Phone: 0800 – 96 03 33 (toll free)
Fax: 0800 – 169 85 54 (toll free)

Other Countries

Phone: +49 6221 – 649 34 0
Fax: +49 6221 – 649 34 40

© PromoCell GmbH