

Human Vascular Cell Culture

"The Important Cells for Primary Vascular Research"

Endothelial Cell (Large Vessels)

- Human Umbilical (HUVEC)
- Human Umbilical Artery (HUAEC)
- Human Aortic (HAoEC)
- Human Coronary Artery (HCAEC)
- Human Pulmonary Artery (HPAEC)
- Human Saphenous Vein (HSaVEC)

Endothelial Cells (Microvascular)

- Human Dermal MV (HDMEC)
- Human Dermal Blood MV (HDBEC)
- Human Dermal Lymphatic (HDLEC)
- Human Cardiac MV (HCMEC)
- Human Pulmonary MV (HPMEC)
- Human Uterine MV (HUtMEC)

Smooth Muscle Cells

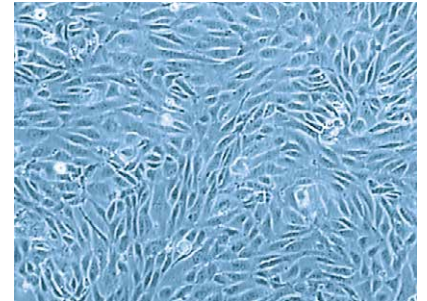
- Human Aortic Smooth Muscle Cells (HAoSMC)
- Human Coronary Artery Smooth Muscle Cells (HCASMC)
- Human Pulmonary Artery Smooth Muscle Cells (HPASMC)
- Human Umbilical Artery Smooth Muscle Cells (HUASMC)

Fibroblasts

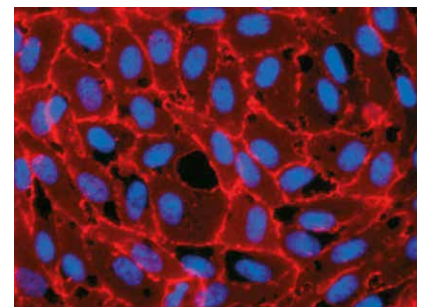
- Human Aortic Adventitial Fibroblasts (HAoAF)

Pericytes

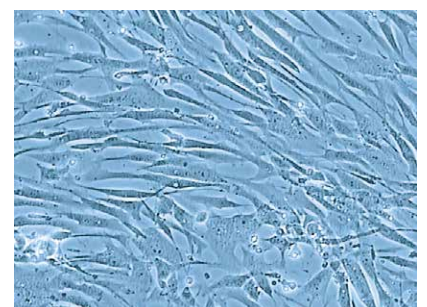
- Human Pericytes from Placenta (hPC-PL)



HUVEC culture in phase contrast.

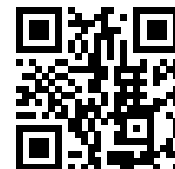


HDMEC culture stained for CD31 antigen. Nuclei counterstained with DAPI.



HPASMC culture in phase contrast.

⇒ [Cell Biology Products for Cardiovascular Research on the back](#)



PromoCell offers a comprehensive portfolio of products for Cardiovascular Research, Drug Development and Cardiac Biomarker Discovery comprising:

Cell-based & Biochemical Assays, Antibodies, Recombinant Proteins & ELISAs for:

- Hypertension, Atherosclerosis & Thrombosis
- Arrhythmia, Heart Failure & Reperfusion
- Myocardial Ischemia/Infarction & Stroke
- Diabetes & Obesity
- Acute Kidney Injury & Kidney Diseases
- Cancer & Stem Cell Research

3D Cell Culture & Cell Model Systems

- Angiogenesis, Cell Migration & Invasion Assays
- 3D Cell Culture Kits

Cell-based & Biochemical Assays

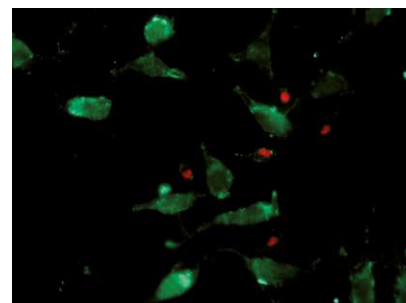
- Cell Viability & Proliferation Assays
- Senescence & Cell Cycle Assays
- Cytotoxicity, Live/Dead & Apoptosis Assays
- Cell Stress, Damage & Aging Assays
- Cell Signaling & Epigenetics Assays
- Assays for Drug Development & ADME

More products for Cardiovascular Research

- Cytokines, Growth Factors & Hormones (e.g. ApoE, BMP, CRP, CT-1, ICAM, IL-6, MMP, TGF-beta, TNF-alpha, VCAM, VEGF)
- Cell Stains, Fluorescent Labels & Calcium Indicators
- Antibodies & ELISAs
- Transfection Reagents

More information available at:

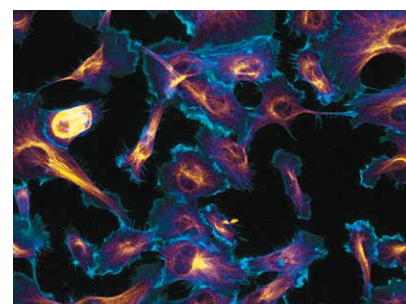
www.promocell.com/product-category/cell-biology/



Double-staining of viable (green) and dead (red) cells using the PromoKine Live/Dead Cell Staining Kit II.



Monitoring tube formation using the Angiogenesis Assay Kit with HUVECs



Cytoskeleton labeling using PromoFluor dyes.

PromoCell GmbH

Sickingenstr. 63/65
69126 Heidelberg
Germany

Email: info@promocell.com
www.promocell.com

USA/Canada

Phone: 1 – 866 – 251 – 2860 (toll free)
Fax: 1 – 866 – 827 – 9219 (toll free)

Deutschland

Telefon: 0800 – 776 66 23 (gebührenfrei)
Fax: 0800 – 100 83 06 (gebührenfrei)

France

Téléphone: 0800 – 90 93 32 (ligne verte)
Téléfax: 0800 – 90 27 36 (ligne verte)

United Kingdom

Phone: 0800 – 96 03 33 (toll free)
Fax: 0800 – 169 85 54 (toll free)

Other Countries

Phone: +49 6221 – 649 34 0
Fax: +49 6221 – 649 34 40

© PromoCell GmbH