

DERMAL CELL CULTURE

PromoCell

HUMAN CELL TYPES

Human Follicle Dermal Papilla Cells (**HFDPC**)

Cat. No. C-12071

Normal Human Epidermal Keratinocytes (**NHEK**)

Cat. No. C-12001 / C-12003

Normal Human Epidermal Melanocytes * (**NHEM**)

Cat. No. C-12400

Normal Human Epidermal Melanocytes 2 (**NHEM 2**)

Cat.No. C-12402 / C-12403

* isolated in Melanocyte Growth Medium or
Melanocyte Growth Medium M2 (PMA-free), respectively

Normal Human Dermal Fibroblasts (**NHDF**)

Cat. No. C-12300 / C-12302

Human Dermal Microvascular Endothelial Cells (**HDMEC**)

Cat. No. C-12210 / C-12212

Human Dermal Blood Endothelial Cells (**HDBEC**)

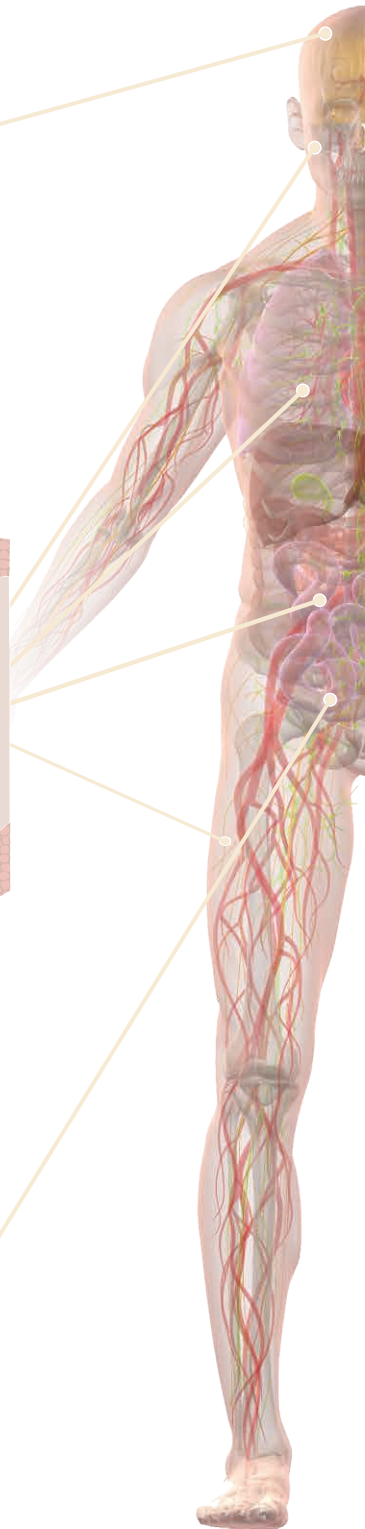
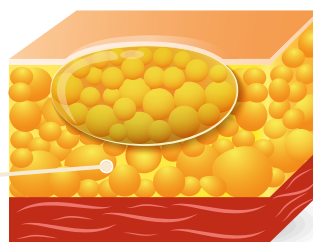
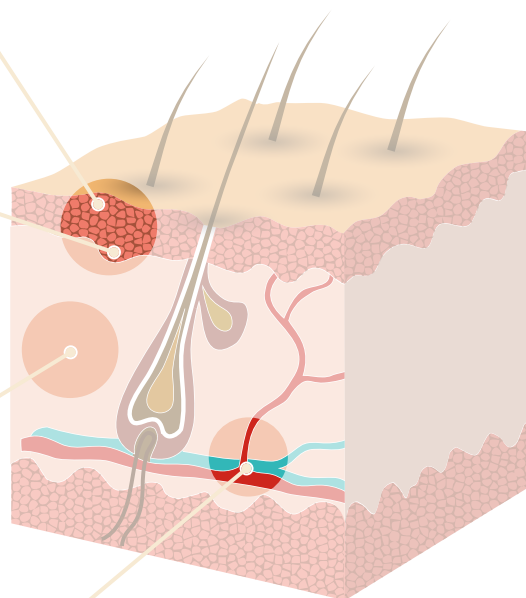
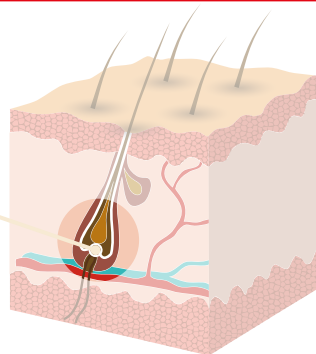
Cat. No. C-12211 / C-12225

Human Dermal Lymphatic Endothelial Cells (**HDLEC**)

Cat. No. C-12216 / C-12217

Human White Preadipocytes (**HWP**)

Cat. No. C-12730



PromoCell GmbH

Sickingenstr. 63/65
69126 Heidelberg
Germany

Email: info@promocell.com
www.promocell.com

USA/Canada

Phone: 1 – 866 – 251 – 2860 (toll free)
Fax: 1 – 866 – 827 – 9219 (toll free)

Deutschland

Telefon: 0800 – 776 66 23 (gebührenfrei)
Fax: 0800 – 100 83 06 (gebührenfrei)

France

Téléphone: 0800 – 90 93 32 (ligne verte)
Téléfax: 0800 – 90 27 36 (ligne verte)

United Kingdom

Phone: 0800 – 96 03 33 (toll free)
Fax: 0800 – 169 85 54 (toll free)

Other Countries

Phone: +49 6221 – 649 34 0
Fax: +49 6221 – 649 34 40

© PromoCell GmbH