

## Instruction Manual

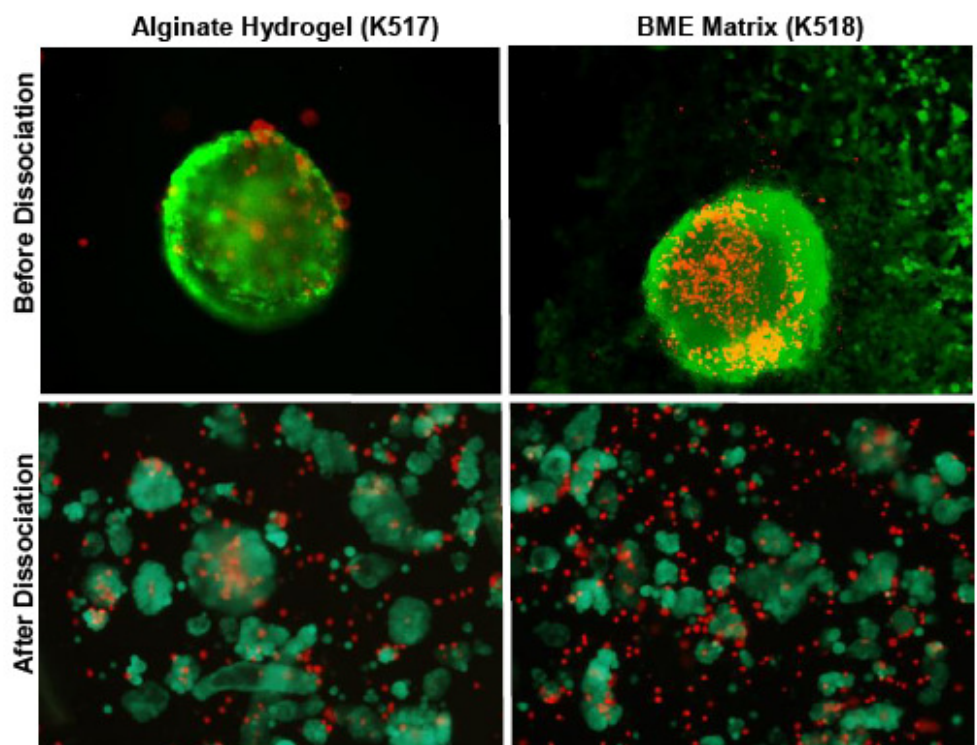
Catalog Number	PK-CA577-K982		
Description	<p>Three dimensional (3D) cell cultures are artificially-created environments in which cells are permitted to grow or interact with their surroundings in a 3D fashion. 3D cell cultures improve the function, differentiation and viability of cells and recapitulate in vivo microenvironment compared to conventional 2D cell cultures. 3D matrices provide a physiologically relevant screening platform, by mimicking the in vivo responses, for many cell types including cancer and stem cells in developmental morphogenesis, pharmacology, drug metabolism and drug toxicity studies. However, when it comes to cell passaging, or studying biochemical processes and protein analysis, there are challenges with separating intact cells from extra-cellular proteins comprising the 3D matrices. While proteases (such as trypsin and accutase) are commonly used to degrade these matrices, it is not recommended in some cases where cells are sensitive to protease digestion; these proteases may modify cellular proteins and signaling or cell surface, thus altering physiological assessments. Further, some proteases-based dissociation methods do not completely dissolve the matrices. PromoKine's non-enzymatic 3D Cell Culture Harvesting Kit provides an optimized and standardized saline-based solution for the isolation of cells and spheroids from matrices (especially for PromoKine's 3D Cell Culture Kits: PK-CA577-K517, -518, -519) with high viability rate for subsequent biochemical, protein and cell-based analysis.</p> <p><b>Applications:</b></p> <ul style="list-style-type: none"> <li>• Matrix and cell /spheroid dissociations</li> <li>• Cell-harvesting for usage in cell-based assay, biochemical and protein analysis</li> </ul> <p><b>Sample Type:</b></p> <ul style="list-style-type: none"> <li>• Matrices</li> <li>• Adherent and suspension spheroids and cells</li> </ul>		
Quantity	100 assays		
Kit Components	<p><b>Components</b></p> <p>Matrix Dissociation Saline Solution</p> <p>Neutralization Buffer</p>	<p><b>Quantity</b></p> <p>40 ml</p> <p>100 ml</p>	<p><b>Cap Code</b></p> <p>NM</p> <p>NM</p>
User Supplied Reagents and Equipment	<ul style="list-style-type: none"> <li>• 1.5 ml Eppendorf tubes (clear and sterile)</li> <li>• 96-well clear microplate</li> </ul> <p>For human primary cells and the corresponding optimized cell culture media visit <a href="http://www.promocell.com">www.promocell.com</a>. For Cytokines/Chemokines and Growth Factors visit <a href="http://www.promokine.info">www.promokine.info</a>.</p>		
Applications / Assay Protocol	<p><b>Storage Conditions and Reagent Preparation:</b></p> <p>Store kit at -20°C, protected from light. Read entire protocol before performing the assay. Perform the assay under sterile conditions.</p> <ul style="list-style-type: none"> <li>• <b>Matrix Dissociation Saline Solution and Neutralization Buffer:</b> Store at -20°C. Thaw and keep at 4°C before use. Stable for six months after the first thaw.</li> </ul> <p><b>Non-Enzymatic Cell Harvesting Protocol:</b></p> <p><b>1. Matrix Dissociation:</b> The following protocol has been optimized for 100 samples that can be processed in a 96-well microplate. For bigger wells, the numbers of processed samples will change. Refer to table in step 3 for suggested volumes if using a different plate). In a clear 96-well microplate, grow cells in appropriate 3D matrices and conditions. Remove all media from wells in the 96-well plate, and add 250-300 µl of Matrix Dissociation Saline Solution. Incubate at RT for 5-10 minutes and then pipet up and down with 1 ml tip until matrix is dissolved. Transfer the cells and solution to 1.5 ml Eppendorf tubes.</p> <p>Notes:</p> <ol style="list-style-type: none"> <li>If matrix doesn't completely dissolve in well, transfer samples to clear Eppendorf tubes, add additional 100 µl of Matrix Dissociation Solution and incubate for another 5-10 minutes. Vortex at low setting if needed.</li> <li>Matrix Dissociation Buffer works best on natural animal and/or plant-based matrices. Synthetic polymers have not been tested with this kit.</li> </ol> <p><b>2. Neutralization:</b> To neutralize the Matrix Dissociation Saline Solution, add 700 µl of Neutralization Buffer to each tube, invert tube a few times to mix, and centrifuge at 1,000 x g, for 5 min at 4°C. Remove the solution carefully without disrupting the cell pellets. Resuspend cell</p>		

pellet in Neutralization Buffer or buffer and media of your preference, for use in assay of interest.  
Notes:

- For biochemistry or protein analysis, use ice-cold Matrix Dissociation Saline Solution and Neutralization Buffer, and keep samples on ice.
- For lysate preparation and storage: add ice-cold Cell lysis buffer (PromoKine's Cell Lysis Buffer PK-CA577-1067-100, -400 or alternative) to cell pellets, snap freeze samples and store at -80°C.
- For live-cell storage (freeze down cells): resuspend cell pellets in appropriate cryopreservation solution and store at -80°C.

**3. Plate optimization** (*optional, plates are not provided*): optimized volumes are indicated in table below

Plate type	96-well	48-well	24-well	12-well	6-well
Matrix Dissociation Solution (ml/sample)	0.3	0.6	1.5	3	5
Neutralization buffer (ml/sample)	0.7	1.4	3	6	12



**Figure:** Dissociation of HepG2 cells from 3D cell culture Alginate Hydrogel (PK-CA577-K517) or BME Matrix (PK-CA577-K518): Cells were cultured and formed spheroids in Alginate Hydrogel or BME Matrices for 21 days. Cells were then dissociated from matrices and harvested according to protocol above. Analysis using Calcein AM staining (green, for live cells), and Ethidium Homodimer-1 dye (red, for apoptotic cells) suggested that cell viability is not affected after performing harvesting protocol.

Note: Calcein AM (Cat. No. PK-CA707-80011) and Ethidium Homodimer-1 (PK-CA707-40014) are not included in the kit.

<b>Storage &amp; Stability</b>	Store kit at -20°C.
<b>Intended Use</b>	For in vitro research use only. Not for diagnostic or therapeutic procedures.

**PromoCell GmbH**

Sickingenstr. 63/65  
69126 Heidelberg  
Germany

Email: [info@promokine.info](mailto:info@promokine.info)  
[www.promokine.info](http://www.promokine.info)

**North America**

Phone: 1 - 866 - 251 - 2860 (toll free)  
Fax: 1 - 866 - 827 - 9219 (toll free)

**Deutschland**

Telefon: 0800 - 776 66 23 (gebührenfrei)  
Fax: 0800 - 100 83 06 (gebührenfrei)

**France**

Téléphone: 0800 90 93 32 (ligne verte)  
Téléfax: 0800 90 27 36 (ligne verte)

**United Kingdom**

Phone: 0800 - 96 03 33 (toll free)  
Fax: 0800 - 169 85 54 (toll free)

**Other Countries**

Phone: +49 6221 - 649 34 0  
Fax: +49 6221 - 649 34 40