

# Follicle Dermal Papilla Cells

## Instruction manual

Product	Size	Catalog number
Human Follicle Dermal Papilla Cells (HFDPC)	500,000 cryopreserved cells 500,000 proliferating cells	C-12071 C-12072

### Product description

Human follicle dermal papilla cells are located in the dermal papilla at the base of hair follicles. Embedded in a laminin and collagen IV rich extracellular matrix, they are essential for induction and maintenance of hair growth. Since these cells express androgen receptors, they represent a well-suited model system for androgen-related research. We offer Human Follicle Dermal Papilla Cells (HFDPC) isolated mainly from normal human dermis of the lateral scalp. Information on donor hair and skin color is available for each lot.

Shortly after isolation, all our Human Follicle Dermal Papilla Cells are cryopreserved using our proprietary, animal-component free, and protein-free cryopreservation medium (for details, please refer to the Certificate of Analysis). Each cryovial contains more than 500,000 viable cells after thawing.

Proliferating cell cultures are made from cryopreserved cells that have been thawed and cultured for three days in our hands and shipped as growing cultures.

### Quality control

We perform rigid quality control tests for each lot of Follicle Dermal Papilla Cells.

The cells are tested for cell morphology, adherence rate, and cell viability. Immuno-histochemical tests for significant markers, e.g. alkaline phosphatase, are carried out for each lot. Growth performance is tested through multiple passages up to 10 population doublings (PD) under culture conditions without antibiotics or antimycotics. In addition, all cells have been tested for the absence of HIV-1, HIV-2, HBV, HCV, and microbial contaminants (fungi, bacteria, and mycoplasma).

### Intended use

Our Follicle Dermal Papilla Cells are for *in vitro* research use only and not for diagnostic or therapeutic procedures.

### Warning

Although tested negative for HIV-1, HIV-2, HBV, and HCV, the cells – like all products of human origin – should be handled as potentially infectious. No test procedure can completely guarantee the absence of infectious agents.

*Follow appropriate safety precautions!*

*After delivery, cryopreserved cells should be stored in liquid nitrogen or seeded directly (see page 2). Proliferating cells must be processed immediately (see page 3).*

# Protocol for cryopreserved cells

Straight after arrival, store the cryopreserved cells in liquid nitrogen, or seed them immediately.

**Note:** Storage at  $-80^{\circ}\text{C}$  is not sufficient for cell preservation and causes irreversible cell damage.

*Use aseptic techniques and a laminar flow bench.*

1

## Prepare the medium

Calculate the required culture surface area according to the plating density (see page 5) and the lot-specific cell numbers stated on the certificate of analysis. Fill the appropriate volume of PromoCell Growth Medium (at least 9 ml per vial of cells) in cell culture vessels. Place the vessels in an incubator ( $37^{\circ}\text{C}$ , 5%  $\text{CO}_2$ ) for 30 minutes.



2

## Thaw the cells

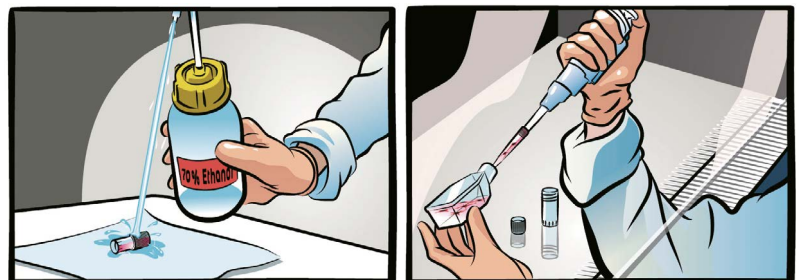
Remove the cryovial from the liquid nitrogen container and immediately place it on dry ice – even for short transportation. Under a laminar flow bench, briefly twist the cap a quarter turn to relieve pressure, then retighten. Immerse the vial in a water bath ( $37^{\circ}\text{C}$ ) up to the height of the screw cap for 2 minutes. Ensure that no water enters the thread of the screw cap.



3

## Disinfect the vial and seed the cells

Thoroughly rinse the cryovial with 70% ethanol under a laminar flow bench. Then, aspirate the excess ethanol from the thread area of the screw cap. Open the vial and transfer the cells to a cell culture vessel containing the pre-warmed medium from step 1.



4

## Incubate the cells

Place the vessel in an incubator ( $37^{\circ}\text{C}$ , 5%  $\text{CO}_2$ ) for cell attachment. Replace the medium after 16–24 hours and every two to three days thereafter. The cells should be subcultured, according to the subcultivation protocol (see page 4), once they have reached 70–90% confluency.



# Protocol for proliferating cells

Start immediately after delivery.  
Use aseptic techniques and a laminar flow bench.

1

## Incubate the cells

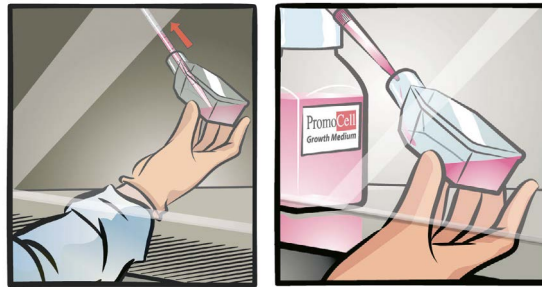
Unpack the culture vessel, do not open the cap, and immediately place it in an incubator (37°C, 5% CO<sub>2</sub>) for 3 hours to allow the cells to recover from transportation.



2

## Replace the transport medium

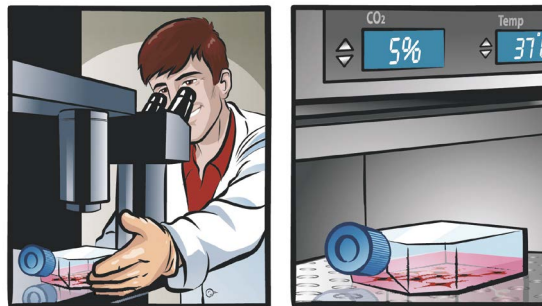
Carefully open the vessel, rinse the inner side of the lid with 70% ethanol, and let air dry. Aspirate the transport medium from the vessel. Add 10 ml of the appropriate PromoCell Cell Growth Medium.



3

## Check and incubate the cells

Check the cell density. Open the cap half a turn and place the vessel in an incubator (37°C, 5% CO<sub>2</sub>). Change the medium every two to three days. The cells should be subcultured, according to the subcultivation protocol (see page 4), once they have reached >70% confluency.



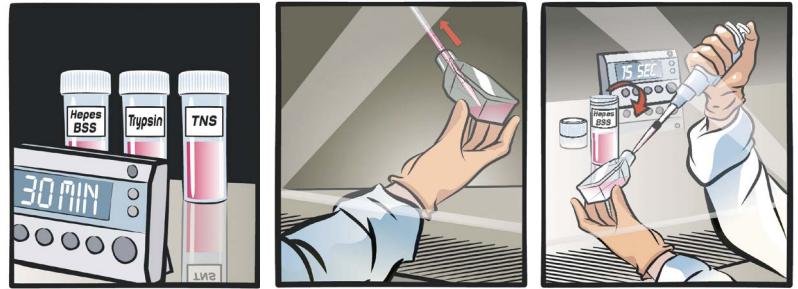
# Subcultivation protocol

Use aseptic techniques and a laminar flow bench.

1

## Prepare the reagents and wash the cells

Place the PromoCell DetachKit at room temperature for at least 30 minutes to adjust the temperature of the reagents. Carefully aspirate the medium from the culture vessel. Add 100  $\mu$ l Hepes BSS Solution per  $\text{cm}^2$  of vessel surface to wash the cells and agitate the vessel carefully for 15 seconds.



2

## Detach the cells

Carefully aspirate the Hepes BSS from the culture vessel. Add 100  $\mu$ l Trypsin/EDTA Solution per  $\text{cm}^2$  of vessel surface. Note: We recommend detaching the cells at room temperature. Close the vessel and examine the cells under a microscope. When the cells start to detach, gently tap the side of the vessel to loosen the remaining cells.



3

## Neutralize the trypsin and harvest the cells

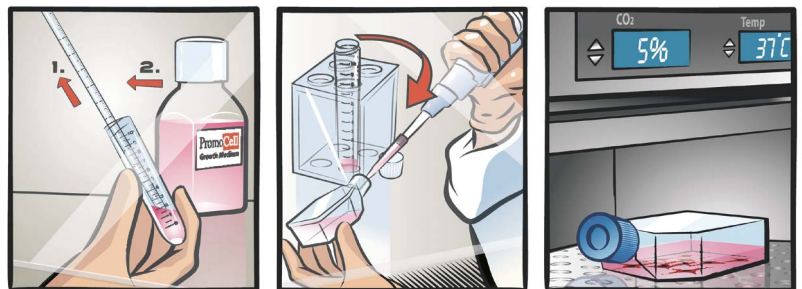
Add 100  $\mu$ l Trypsin Neutralization Solution per  $\text{cm}^2$  of vessel surface and gently agitate. Carefully aspirate the cell suspension and transfer it to a centrifugation tube. Spin down the cells for 3 minutes at 220 x g.



4

## Incubate the cells

Discard the supernatant (step 1), add 1 ml of the appropriate PromoCell Cell Growth Medium (step 2), and re-suspend the cells by carefully pipetting up and down. Plate the cells according to the recommended seeding density in new cell culture vessels containing prewarmed PromoCell Cell Growth Medium. Place the vessels in an incubator (37°C, 5% CO<sub>2</sub>) and change the media every two to three days.



## Specifications

Product	Recommended Culture Media*	Plating density	Passage after thawing	Marker	Population doublings
Human Follicle Dermal Papilla Cells (HFDPC)	C-26501	5,000–10,000 cells per cm <sup>2</sup>	P2	Alkaline phosphatase <sup>+</sup>	> 10

\*The catalog numbers in this table are for media in ready-to-use packaging.

## Related products

Product	Size	Catalog number
Follicle Dermal Papilla Cell Growth Medium (Ready-to-use)	500 ml	C-26501
Follicle Dermal Papilla Cell Growth Medium Kit	500 ml	C-26502
Follicle Dermal Papilla Cell Basal Medium	500 ml	C-26500
Follicle Dermal Papilla Cell Basal Medium, phenol red-free	500 ml	C-26505
Follicle Dermal Papilla Cell Growth Medium SupplementMix	for 500 ml	C-39625
Follicle Dermal Papilla Cell Growth Medium SupplementPack	for 500 ml	C-39620
DetachKit	30 ml 125 ml 250 ml	C-41200 C-41210 C-41220
Cryo-SFM Plus	30 ml 125 ml	C-29920 C-29922
HFDPC Pellet	1 million cells per pellet	C-14005

**PromoCell GmbH**

Sickingenstr. 63/65  
69126 Heidelberg  
Germany

info@promocell.com  
www.promocell.com

**USA/Canada**

Phone: 1 – 866 – 251 – 2860 (toll free)  
Fax: 1 – 866 – 827 – 9219 (toll free)

**Deutschland**

Telefon: 0800 – 776 66 23 (gebührenfrei)  
Fax: 0800 – 100 83 06 (gebührenfrei)

**France**

Téléphone: 0800 – 90 93 32 (ligne verte)  
Téléfax: 0800 – 90 27 36 (ligne verte)

**United Kingdom**

Phone: 0800 96 03 33 (toll free)  
Fax: 0800 169 85 54 (toll free)

**Other Countries**

Phone: +49 6221 – 649 34 0  
Fax: +49 6221 – 649 34 40

© PromoCell GmbH