

# Human Cell Types

Discover our broad range of human cell types, including human primary cells, stem cells and blood cells.

## Human Primary Cells

### Respiratory System

**Human Nasal Epithelial Cells (HNEpC)**  
Cat. No. C-12620

**Human Tracheal Epithelial Cells (HTEpC)**  
Cat. No. C-12644

**Human Tracheal Smooth Muscle Cells (HTSMC)**  
Cat. No. C-12565

**Human Bronchial Epithelial Cells (HBEpC)**  
Cat. No. C-12640

**Human Bronchial Smooth Muscle Cells (HBSMC)**  
Cat. No. C-12561

**Human Pulmonary Artery Endothelial Cells (HPAEC)**  
Cat. No. C-12241

**Human Pulmonary Artery Smooth Muscle Cells (HPASMC)**  
Cat. No. C-12521

**Human Pulmonary Fibroblasts (HPF)**  
Cat. No. C-12360

**Human Pulmonary Microvascular Endothelial Cells (HPMEC)**  
Cat. No. C-12281

**Human Small Airway Epithelial Cells (HSAEpC)**  
Cat. No. C-12642

### Cardiovascular System

**Human Cardiac Fibroblasts (HCF)**  
Cat. No. C-12375

**Human Aortic Adventitial Fibroblasts (HAoAF)**  
Cat. No. C-12380

**Human Cardiac Microvascular Endothelial Cells (HCMEC)**  
Cat. No. C-12285

**Human Cardiac Myocytes (HCM)**  
Cat. No. C-12810

**Human Coronary Artery Endothelial Cells (HCAEC)**  
Cat. No. C-12221

**Human Coronary Artery Smooth Muscle Cells (HCASMC)**  
Cat. No. C-12511

**Human Aortic Smooth Muscle Cells (HAoSMC)**  
Cat. No. C-12533

**Human Saphenous Vein Endothelial Cells (HSaVEC)**  
Cat. No. C-12231

**Human Aortic Endothelial Cells (HAoEC)**  
Cat. No. C-12271

### Musculoskeletal System

**Human Skeletal Muscle Cells (SkMC)**  
Cat. No. C-12530

**Human Chondrocytes (HCH)**  
Cat. No. C-12710

**Human Osteoblasts (HOB)**  
Cat. No. C-12720

### Skin & Connective Tissue

**Human Follicle Dermal Papilla Cells (HFDPC)**  
Cat. No. C-12071

**Normal Human Dermal Fibroblasts (NHDF)**  
Cat. No. C-12300/C-12302

**Human Dermal Blood Endothelial Cells (HDBEC)**  
Cat. No. C-12211/C-12225

**Human Dermal Lymphatic Endothelial Cells (HDLEC)**  
Cat. No. C-12216/C-12217

**Human Dermal Microvascular Endothelial Cells (HDMEC)**  
Cat. No. C-12210/C-12212

**Normal Human Epidermal Keratinocytes (NHEK)**  
Cat. No. C-12001/C-12003

**Normal Human Epidermal Keratinocytes (NHEK) GM3**  
Cat. No. C-12011/C-12013

**Normal Human Epidermal Melanocytes (NHEM)**  
Cat. No. C-12400

**Normal Human Epidermal Melanocytes M3 (NHEM M3)**  
Cat. No. C-12422/C-12413

### Umbilical Cord

**Human Umbilical Vein Endothelial Cells (HUVEC)**  
Cat. No. C-12200

**Human Umbilical Vein Endothelial Cells 2 (HUVEC 2)**  
Cat. No. C-12206

**Human Umbilical Artery Endothelial Cells (HUAEC)**  
Cat. No. C-12202

**Human Umbilical Artery Smooth Muscle Cells (HUASMC)**  
Cat. No. C-12500

### Uterus

**Human Uterine Fibroblasts (HUF)**  
Cat. No. C-12385

**Human Uterine Microvascular Endothelial Cells (HUtMEC)**  
Cat. No. C-12295

**Human Uterine Smooth Muscle Cells (HUtSMC)**  
Cat. No. C-12575

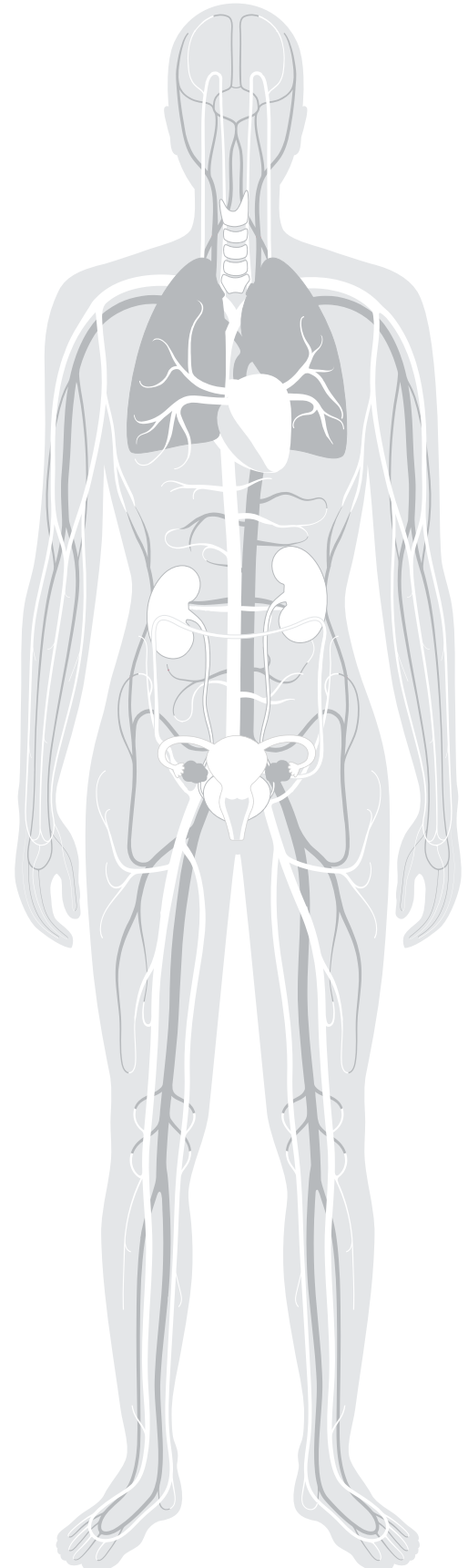
### Kidney

**Human Renal Epithelial Cells (HREpC)**  
Cat. No. C-12665

**Human Renal Cortical Epithelial Cells (HRCEpC)**  
Cat. No. C-12660

### Adipose Tissue

**Human White Preadipocytes (HWP)**  
Cat. No. C-12732/C-12735



# Human Stem Cells



## Bone Marrow

Human Mesenchymal Stem Cells from bone marrow (hMSC-BM)  
Cat. No. C-12974



## Adipose Tissue

Human Mesenchymal Stem Cells from adipose tissue (hMSC-AT)  
Cat. No. C-12977



## Umbilical Cord and Placenta

Human Pericytes from Placenta (hPC-PL)  
Cat. No. C-12980

Human Mesenchymal Stem Cells from umbilical cord matrix (hMSC-UC)  
Cat. No. C-12971

# Human Blood Cells



## Peripheral Blood

Human Mononuclear Cells from peripheral blood (hMNC-PB)  
Cat. No. C-12907

Human CD14+ Monocytes (hMoCD14+-PB)  
Cat. No. C-12909

Human M1 Macrophages (GM-CSF) monocyte-derived  
Cat. No. C-12914

Human M2 Macrophages (M-CSF) monocyte-derived  
Cat. No. C-12915



## Umbilical Cord

Human Mononuclear Cells from umbilical cord blood (hMNC-CB)  
Cat. No. C-12901

Human CD34+ Progenitor Cells (hCD34+-CB)  
Cat. No. C-12921

# Discover

Customize your primary cell requirements based on specific donor criteria.

Learn more:

[page.promocell.com/donor-type-request](https://page.promocell.com/donor-type-request)

**PromoCell GmbH**  
Sickingenstr. 63/65  
69126 Heidelberg  
Germany

**USA/Canada**  
Phone: 1-866-251-2860 (toll free)  
Fax: 1-866-827-9219 (toll free)

**Deutschland**  
Telefon: 0800-776 66 23 (gebührenfrei)  
Fax: 0800-100 83 06 (gebührenfrei)

**France**  
Téléphone: 0800-90 93 32 (ligne verte)  
Téléfax: 0800-90 27 36 (ligne verte)

**United Kingdom**  
Phone: 0800 96 03 33 (toll free)  
Fax: 0800 169 85 54 (toll free)

**Other Countries**  
Phone: +49 6221-649 34 0  
Fax: +49 6221-649 34 40

info@promocell.com  
www.promocell.com

© PromoCell GmbH